



### Prior to Installation

Due to its large size, several aspects should be taken into account before installation.

1. Check the route to the location where the panels are intended to be placed, to ensure that two people will be able to handle the panel to the installation place.
2. Kobert-In cannot be installed outdoors. When in doubt, check with the manufacturer.
3. Review all the information on the technical sheet to know if the product meets the appropriate requirements of the place where you want to install.
4. Establish a wide and safe workspace to be able to manipulate the panels.

### Content of the box

The box contains two panels of 1200x1200. These panels have continuity if you place one on the top of the other in the correct sense.

### Equipment & Materials to Install Kobert-In Panels

1. Table saw/Circular saw with cutting guide. Cutting guide must be long enough to cut the length of the panel. Circular saw blade should be suitable for cutting aluminum.
2. Rubber trowel to apply grout material between panels.
3. Sponge to clean excess grout.
4. Electric drill is only necessary if you need to make holes for electrical outlets, light switches, etc. A quick cutting steel drill bit is recommended.
5. Wide masking tape to protect edges of panels from excess grout.
6. Sandpaper #120.
7. Construction Adhesive: Make sure you use the proper adhesive appropriated for the surface you'll glue the panel on. Please read the information on the tube prior to use it. We recommend the following brand DAP MAX SRENGTH, Lepage, PL and Adfast.
8. Grout or silicone to fill in seams.

### Transportation & Handling

1. Upon opening the package/pallet, before you handle the panels, make sure they are in good condition.
2. Carry the Wall Impression panels as individual pieces using two people (Figure 1).
3. Avoid setting the panels on the floor by the corners, always try to set the panels down on the flat edge and support it with something soft like wood or rubber that will avoid scratches.
4. Wear protective gloves when handling the panels.
5. Transport the panels perpendicular to the ground.
6. Select an open and safe work area as close as possible to the installation location.
7. When cutting the panels be sure that the height of the cutting table is at a comfortable level for the installers to ensure precision cuts.

### Recommendations

1. Check the flatness of the wall you are installing the panels on using a 5' level (Figure 2). The maximum allowable tolerance is 1/8 inch, anything more should be filled with some filler material that is fixed to the wall to even it out. Also check that the wall surface you are installing onto is dry and free of moisture. Clean all dust, grease or any other substance that may compromise the adhesion of the panel to the wall.
2. Be aware that every box has two panels. To have an optimal design view, these two panels have to be installed one on the top of the other, making the design continuity as shown in the (Figure 2).

### Apply the Adhesive

1. First place the panel on the work table with the non-printed side up, remove the protective film, apply the recommended adhesive (Figure 3) taking into account that the thread should be no less than 1/8 inch thick (Figure 3a), this can be controlled by the diameter of the hole in the cartridge applicator
2. The adhesive should be placed around the perimeter of the panel on all four sides at about 1 inch from the edge. Then apply vertical thread up and down the length of the panel at about 8 inches apart. (Figure 3b).

### Install the Panel

1. Place the panel #1 against the wall following the steps of figure 3. Place the panel #2 on top of panel #1 making sure they have the correct continuity direction (Figure 4). To continue the installation place panel #1 of a new box next to panel #1 and repeat the steps following #2 panel on top. The adhesive will allow you to make positioning adjustments for 15-20 minutes (depending on the used brand). This time varies based of the humidity within the room where it is being installed. High humidity reduces the time and low humidity increases the time.
2. Install spacers (Figure 5). We recommend placing 1/8-inch spacers between each panel and between panels and the floor.

### Cutting

1. To cut the panels you must use a circular saw with a finishing blade with a minimum of 80 tooth or an aluminium cutting blade (Figure 6). The cutting operation should always be done with the printed side up. Before making the cut, fix the cutting guide to the panel using pressure clamps, we recommend the use of a square to ensure that the cut is straight.
2. Once the cut is made, carefully sand the cut edge with sandpaper to smooth it out.

### Applying sealant to joints

1. Once all the panels have been installed, tape each side of the joints before filling with sealant (Figure 7).
2. Wipe off excess sealant with a plastic spatula (Figure 8). Important: clean-up of excess sealant should not be delayed, the drier the sealer is, the more difficult it will be to remove.

INSTALLATION TIPS / CONSEILS D'INSTALLATION / CONSEJOS DE INSTALACIÓN

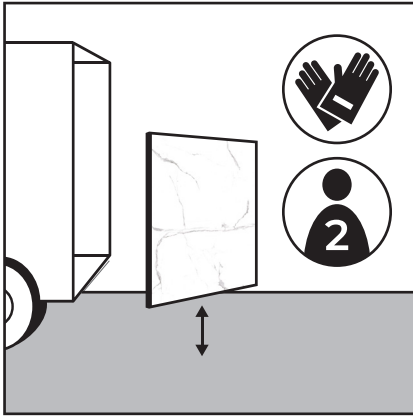


Figure 1

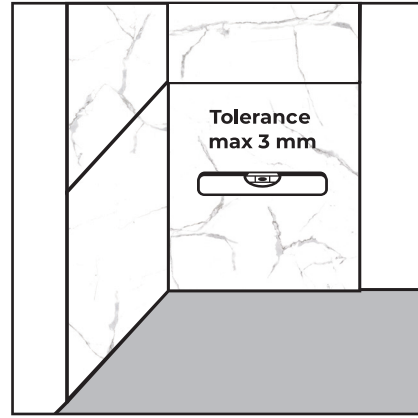


Figure 2

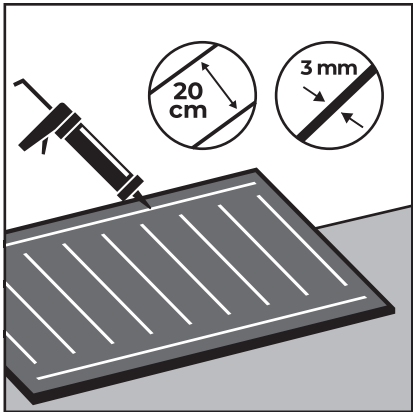


Figure 3



Figure 4

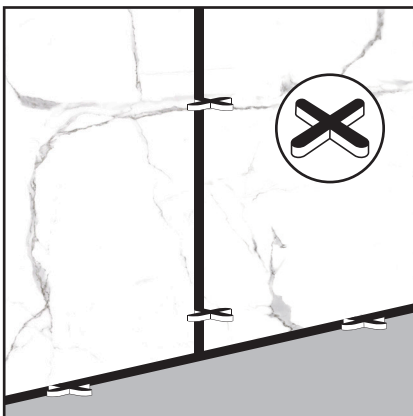


Figure 5

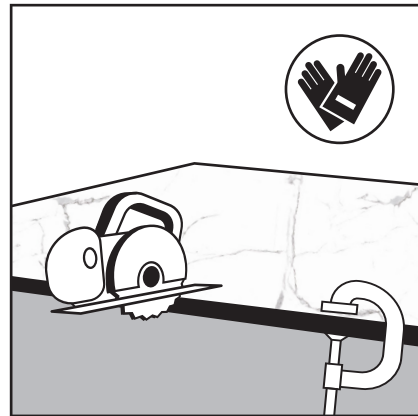


Figure 6

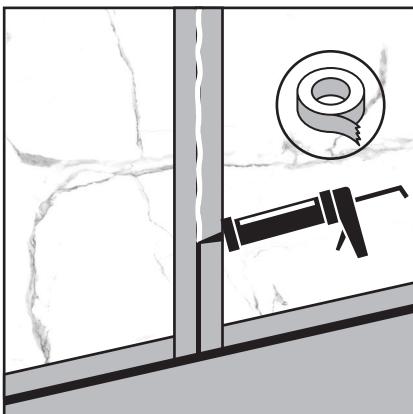


Figure 7

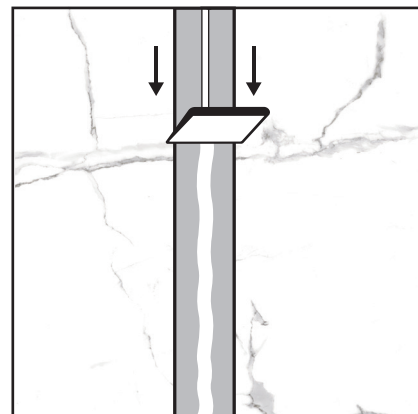


Figure 8